

electricradiatorsdirect

0330 300 4444



HAVERLAND RC WAVE +

QUICK START GUIDE

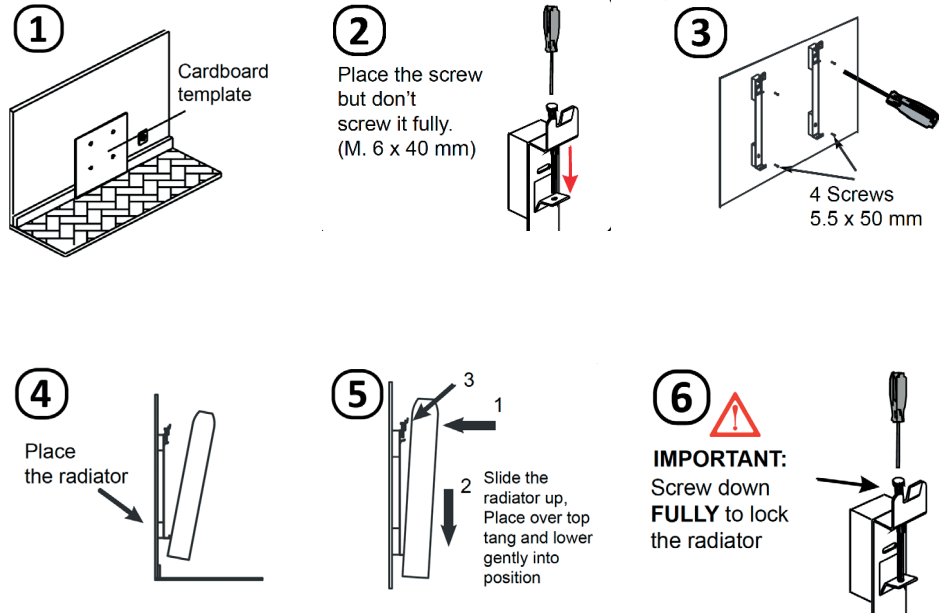


Follow the link at the end of this guide to access the full manual online.

Manual includes full installation and programming instructions, warranty details, safety guidance and advanced settings.

## INSTALLATION

Fix firmly to a solid and levelled wall.  
Check socket is within reaching distance.  
Unit must not be mounted within 15cm of any object - including adjacent walls.



## SAFETY



- DO NOT COVER
- NOT FOR USE IN BATHROOMS
- SEE MANUAL FOR FULL SAFETY DETAILS



## INITIAL SETUP

- Plug in.
- Press the ON/OFF switch on the back of the unit.

Press the ON/OFF switch located on the right-hand side.



## SET DAY & TIME

Use arrow keys **M** and **B** to set day of week.

1 = Monday. Press **\*** to confirm.

Use arrow keys to set hours. Press **\***.

Use arrow keys to set minutes. Press **\***.

Press **\*** to confirm.

## MANUAL MODE

Press **M** until you see the

Press **B** to cycle between modes.

Comfort , Economy and Anti-Frost

To change mode temperatures, hold down

**M** on the manual or automatic screen. Use

**M** and **B** to adjust and **\*** to confirm.

**NOTE! ANTI-FREEZE TEMPERATURE CANNOT BE ADJUSTED.**

## CONTROL PANEL



SET TEMPERATURE — TEMPERATURE NOW

## CONNECTING TO THE APP

Download Haverland BT app from AppStore (iOS) or Google Play (Android).

Set your heating program by assigning mode icons. Press connect on app.

Press **BT** on your unit.

Press on the app.

'Haverland' should appear on the app. Press this to select your unit.

Press to send program to the selected radiator.

## TIPS & TROUBLESHOOTING

Frost mode acts as the radiator's standby setting. To switch it on, press **\***.



Keyboard not responding and displaying the padlock symbol? That means it's locked!



PADLOCK

Press **M** and **\*** together to unlock.

Follow the link at the end of this guide to access the full manual online.

Manual includes full installation and programming instructions, warranty details, safety guidance and advanced settings.

<https://www.electricradiatorsdirect.co.uk/media/pdf/haverland-rc-plus-anthracite-manual>