

electricradiatorsdirect

0330 300 4444



## HAVERLAND SMARTWAVE

### QUICK START GUIDE

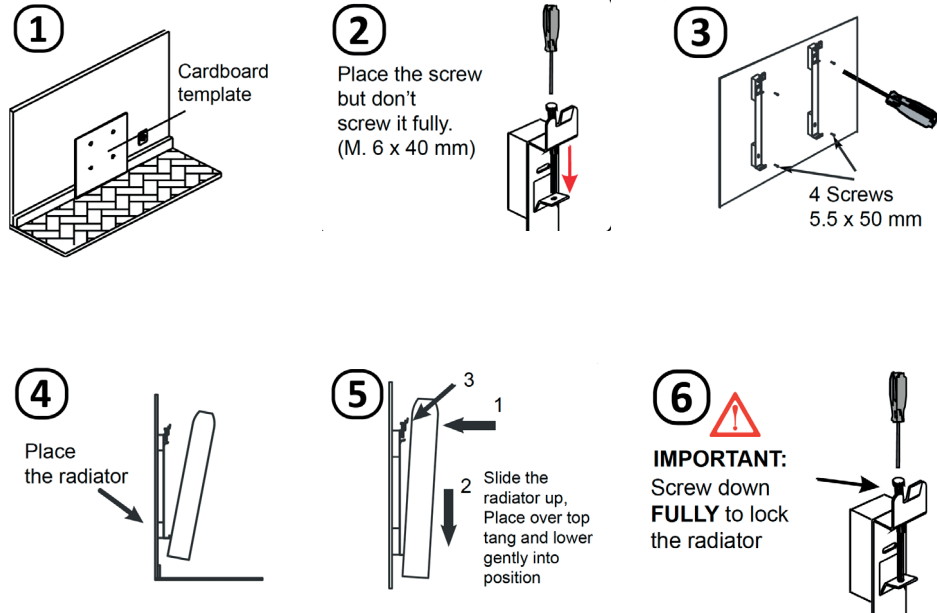


Follow the link at the end of this guide to access the full manual online.

Manual includes full installation and programming instructions, warranty details, safety guidance and advanced settings.

## INSTALLATION

- Fix firmly to a solid and levelled wall.
- Check socket is within reaching distance.
- Unit must not be mounted within 15cm of any object - including adjacent walls.



## SAFETY



- DO NOT COVER
- NOT FOR USE IN BATHROOMS
- SEE MANUAL FOR FULL SAFETY DETAILS



## INITIAL SETUP

- Plug in.
- Press the ON/OFF switch on the back of the unit.

Press the ON /OFF switch located on the right-hand side.



## CONTROLLING VIA RADIATOR

Press the and keys together to toggle through the three modes: **SENSOR**, **LEARNING** and **MANUAL**.

### SENSOR MODE

- Top right-hand light is fixed.
- The unit will heat whenever it senses movement.

### LEARNING MODE

- Top right-hand light is flashing.
- The unit will start building a heating program based on your movements.

### MANUAL MODE

Top right-hand light is **OFF**. Press to toggle between the three heating modes:

**COMFORT** - RED LED light

**ECONOMY** - GREEN LED light

**ANTI-FROST** - BLUE LED light

### OPERATING TEMPERATURE

You can change Comfort and Economy temperatures in manual mode:

Select mode as above.

Press to edit temperature. The numbers will flash.

Use and to adjust.

## WIFI CONTROL

(REQUIRES SMARTBOX, SUPPLIED SEPARATELY).

### SMART BOX SETUP

- Plug Ethernet cable into the back of router.
- Plug power supply into socket.



### CONNECTING TO THE APP

Download the Haverland App from AppleStore (iOS) or Google Play (Android).

- Create an account.
- Follow steps on app to connect to SmartBox.

### CONNECTING RADIATORS TO APP

- Press "Install" on the app.
- Press "+ Heater".
- Press "Start Search".
- Put the unit in stand-by mode.
- Press and hold the and for three seconds.
- Repeat process for all SmartWaves.

FOR GUIDANCE ON USING THE APP, OR INSTRUCTIONS FOR PROGRAMMING VIA THE RADIATOR, CHECK THE FULL MANUAL.

## TROUBLESHOOTING

KEYBOARD NOT RESPONDING AND SHOWING A BLUE LIGHT? IT MAY BE LOCKED.

Press and to unlock.

TO CONNECT WITH ALEXA, DOWNLOAD THE FULL MANUAL FROM THE LINK BELOW OR SCAN THE QR CODE BELOW:



Follow the link at the end of this guide to access the full manual online. Manual includes full installation and programming instructions, warranty details, safety guidance and advanced settings.

<https://www.electricradiatorsdirect.co.uk/media/pdf/haverland-smartwave-manual>

<https://www.electricradiatorsdirect.co.uk/media/pdf/Amazon-Alexa-for-Haverland-Jan-2018-SmartWave.pdf>