

WIRELESS RECEIVER

The Herschel IQ R1 wireless receiver is specifically designed to control Herschel infrared panel heaters.

The R1 will operate with the Herschel IQ T1 wireless thermostat range and the Herschel IQ Internet Hub to allow remote control via an App.

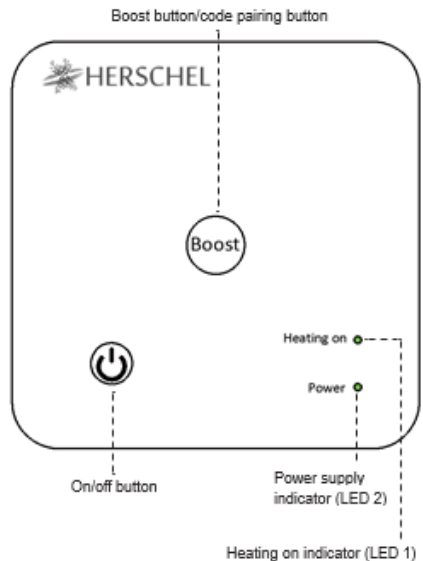
The R1 incorporates an internal temperature sensor, a 1 hour “Boost” function and the latest open window technology.

When paired with the T1, the T1 will sense the room temperature and will override the R1’s built in temperature sensor. When paired with the iQ Hub, the R1 will act as the thermostat and is programmed from the App.

Please read all instructions fully before installing and retain for future reference.

Key features

- Built in temperature sensor
- On / Off button
- 1 hour “Boost” function
- Open window technology
- “Heating on” and “Power” on indicators
- RF frequency: 433Mhz
- Wireless distance: 200m unobstructed
- Surface mounting
- 12 month warranty
- App-enabled via iQ Hub (sold separately)
- CE, Rohs , R&TTE approved



IMPORTANT

Maximum load is 10A / 2.3kw at 230v. The R1 can be used to control several Herschel panel heaters but the maximum wattage of 2.3kw (2,300w) must not be exceeded. Do not use for any other non-Herschel heating devices. INDOOR USE ONLY.

The R1 can be fitted directly onto a cable box where both mains and heater cables are already recessed. In cases where either the heater cable or mains cable (or both) are surface-mounted on a wall, the supplied baseplate must also be used. Prior to installing, ensure that the power supply is OFF.

Installation Instructions

The Herschel IQ R1 is capable of being installed by competent DIY persons but if in any doubt please consult a suitably qualified electrician or Herschel Accredited Installer.

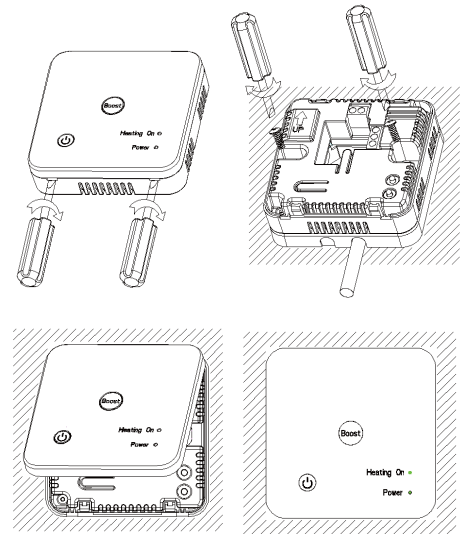
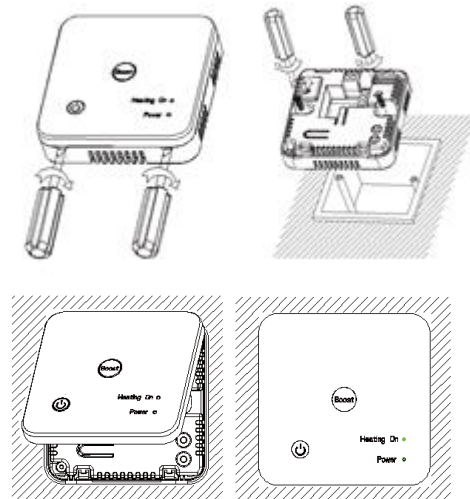
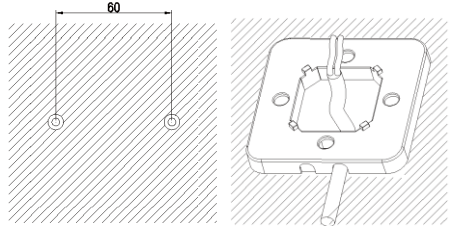
The R1 must be used in conjunction with a fused spur.

The unit must not be used as a fused spur itself.

Mounting onto a recessed box

Remove the front using a small screwdriver.


Mounting onto a wall surface



Wiring

Connect the live and neutral AC mains (marked AC230v). This feed should come from the fused spur.

Remove the mains plug (if fitted) from the Herschel heater and connect to the terminals marked 10A.

Insert the earth wire from the mains and the earth wire from the heater into the terminal marked as .

Operating Instructions

The Herschel R1 receiver needs to be “paired” with an iQ Hub or T1 Gen 3 Controller. More than one R1 may be paired to any controller using the procedure below.

To pair with an iQ Hub with App Control


- Place the Hub into “waiting for pairing” (see hub instructions).
- Press the “Boost” button until LED 1 flashes quickly.
- When LED 1 stops flashing, pairing is complete.
- The R1 may now be programmed via the iQ App.

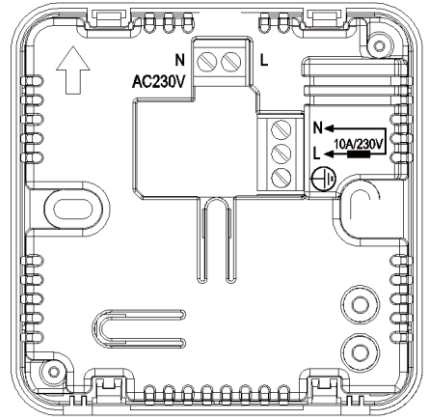
To pair with a T1 Gen 3 Control

On the R1

Press and hold the Boost button on the R1 receiver until the “Heating on” indicator (LED1) flashes quickly.

On the T1

Turn the T1 off by pressing . Then press and hold the “MENU” button for 5 seconds until a code is displayed, then press the MENU button again. LED1 will stop flashing when paired.



Once paired, the receiver will receive commands from the controller. When the heater is on, the “Heating on” indicator will turn green. The “Power” indicator is illuminated at all times when the receiver has mains power.

To pair with a different control unit

1. Repeat the pairing process above for the new controller/receiver combination you wish to pair.
2. To avoid accidental re-pairing please note that after pushing the boost button on the R1 for 5 seconds, if no further pairing instructions are received from a new controller within one minute, the R1 will revert to its original pairing.

Special Functions

1. Boost Mode

Pressing the Boost button will turn the Herschel heater on for an hour. The “Heating on” indicator (LED 1) will turn red to indicate Boost mode. To cancel Boost Mode, press the Boost button twice quickly.

2. Failsafe Mode

If the R1 fails to receive any commands from the T1 for more than 30 minutes, the R1 will operate the heater at a regulated temperature of 18°C until a command is received. If paired directly to the iQ Hub, the R1 will stay on its current settings. This feature ensures that the heater can still operate in case of failure of the controller or signal issues.

3. Herschel open window technology

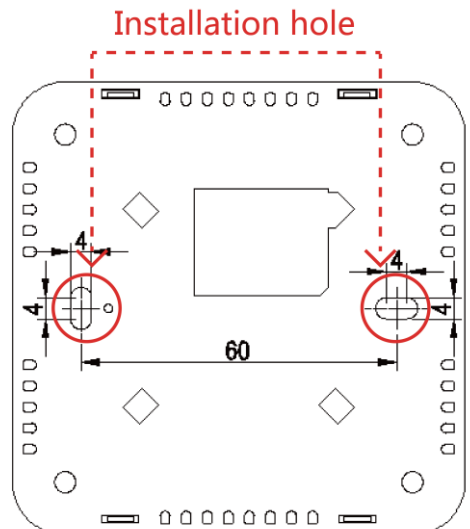
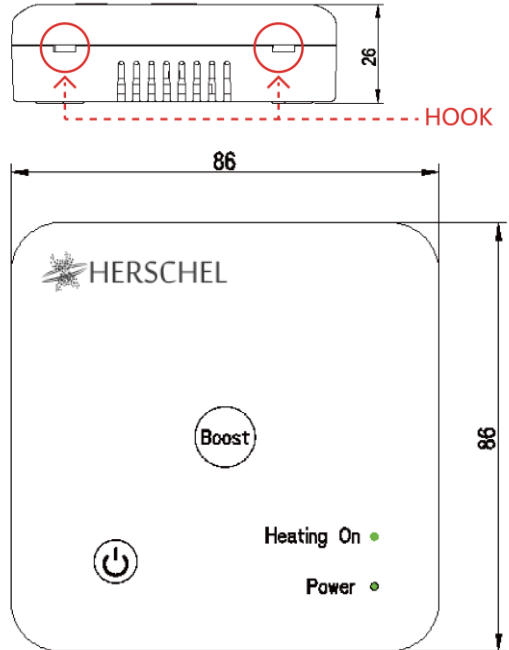
At room temperatures above 14°C, whilst the unit is in “Heating on” mode (including boost mode), if the unit senses a temperature decrease of 2°C or more the receiver will stop heating for one hour and the power indicator will change from green to red. During this one hour, if the user presses the “Boost” button or adjusts the temperature higher than the current room temperature the receiver will override this mode and work according to the latest command. This function is designed to save energy and ensure compliance with European energy reduction directives.

7 Day Program

In Program mode under the App control, the R2 will run according to the schedule below until you change it. When paired with T1 Gen 3 the R1 will operate under the T1 program.

	<u>All days</u>
Period 1	0600 20°C
Period 2	0900 16°C
Period 3	16:00 20°C
Period 4	23:00 16°C

Dimensions (mm):



Technical Information:

Frequency	433 MHz
Power Supply	110 – 230V AC, 50/60Hz
Set Point Range	5~30°C
Ambient	0~50°C
Relative Humidity	85%
Sensor	NTC 10K, 3950ohms at 25°C
Accuracy	± 0.5°C (step control by +0.5°C)
Protection Class	IP30
Housing	ABS to UL94-5 fire retardant plastic

Certifications:



- EN60950 Information Equipment Safety
- EMC ETSI EN301 489
- Radio ETSI EN300220
- EMC EN61000-6-3: 2007 + A1: 2011 EMC EN61000-3-2:2014
- EMC EN61000-3-3: 2013
- EMC EN61000-6-1:2007
- ISO 9001: 2008 Compliant Manufacture
- EN60730-2-9:2010 with EN60730-1:2011 (Safety of Automatic Electrical Controls)
- RoHS 2011/65/EC
- REACH 1907/2006/EC