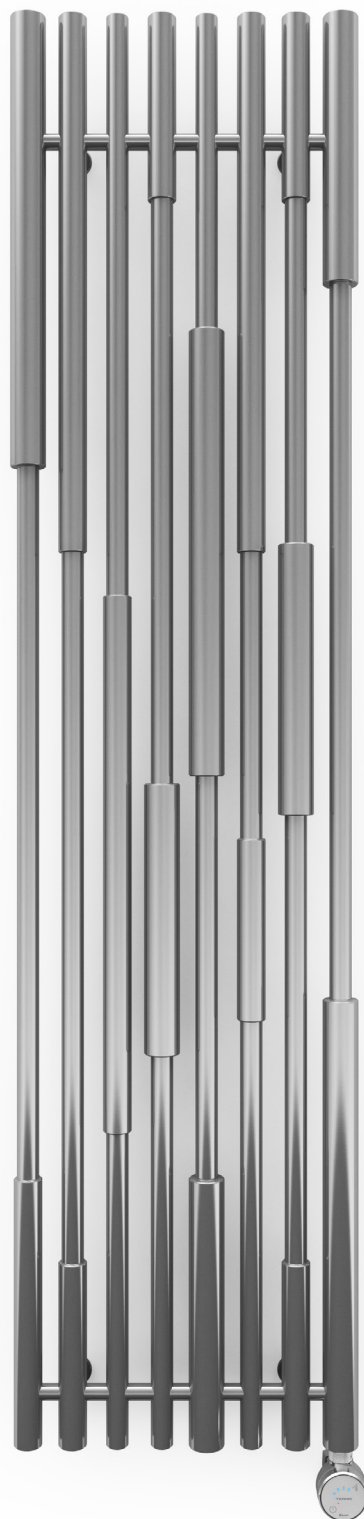


# Cane E



**Cane E** 1600↕ × 390↔ E8  
colour: Chrome Effect

MOA Blue heating element



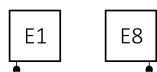
**TERMA**  
SINCE 1990



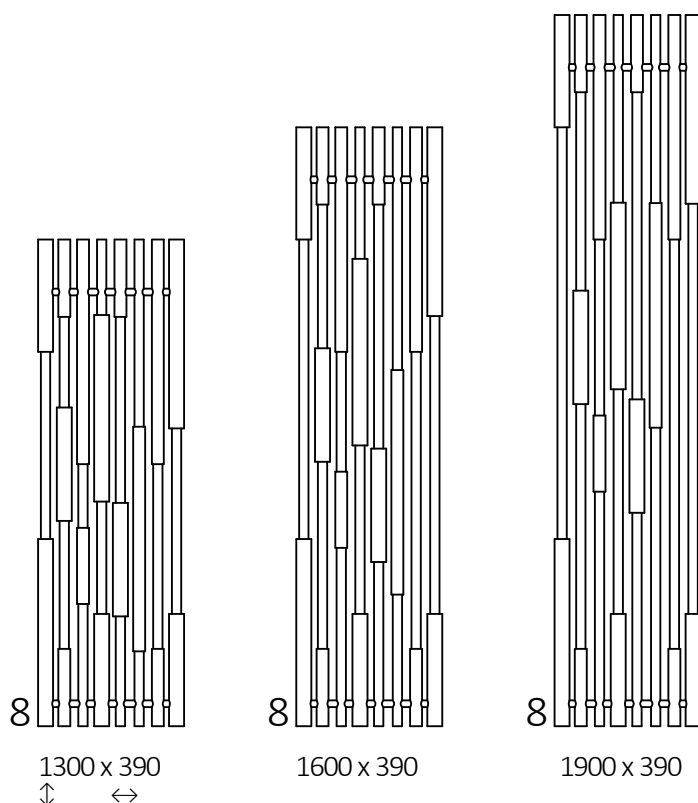
# Cane E






## Connections:



## Available sizes:



## Specification:

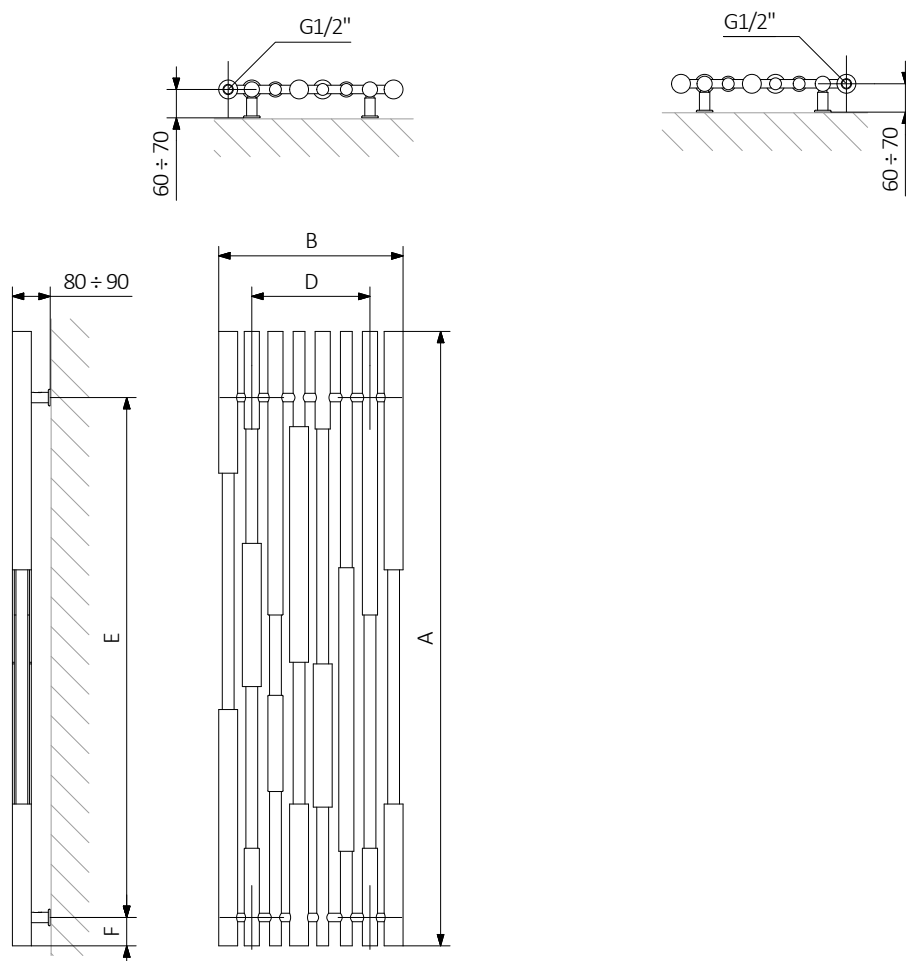
A ↓ [mm]	B ↔ [mm]	 [W]	D [mm]	E [mm]	F [mm]	 [dm <sup>3</sup> ]	 [kg]	Product code <small>Configuration code p. 5</small>
1300	390	600	250	1100	60	6,77	19,01	WLCAN130039
1600	390	800	250	1400	60	7,69	21,53	WLCAN160039
1900	390	800	250	1700	60	8,56	24,71	WLCAN190039



## Technical drawing:

E1

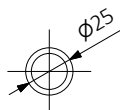
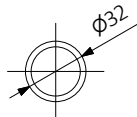
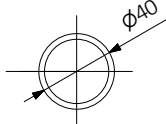
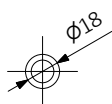
E8



A – Height B – Width C1-C5 – Distance between pipe centres D – Horizontal distance between mounting bracket centres  
E – Vertical distance between mounting brackets F – Distance between a mounting bracket and the bottom of the radiator

Collector:

Pipe:





In the table with technical data, the last column lists product codes. When placing an order, please remember to quote the product code followed by the configuration code as shown in the diagram below:

## Construction of electric heater configuration code:

WLCAN130039

PRODUCT CODE  
(located in the table for the product)

K916E8MOBM

CONFIGURATION CODE  
(supplemented by hand)

### Example Configuration

**K** **916** **E8** **MOB** **M**

Package code   Colour code   Connection code   Heating element code   Type of heating element cable code  
K - carton box

## Epoxy primer

**E** – Code of epoxy primer is an extra processes.

WLCAN130039 K916E8 **E** — *Extra processes or additions code*



## Legenda



Radiator available in a "water" version.



Radiator suitable for dual fuel connection. Electric heating element can be installed.



Radiator available in electric only version. It comes prefilled with a 'heating medium' and equipped with a heating element. All tested and ready to use.



Connection types dedicated for this radiator. The icon shows the flow and return connections for the radiator as well as the thermostatic valve and heating element position if applicable.



Suggested heating element power output for electric and dual fuel versions.



Weight.



Capacity.



Available in chrome finish.



No additional payment for a color.