

electricradiatorsdirect

0330 300 4444



HAVERLAND RC WAVE

QUICK START GUIDE

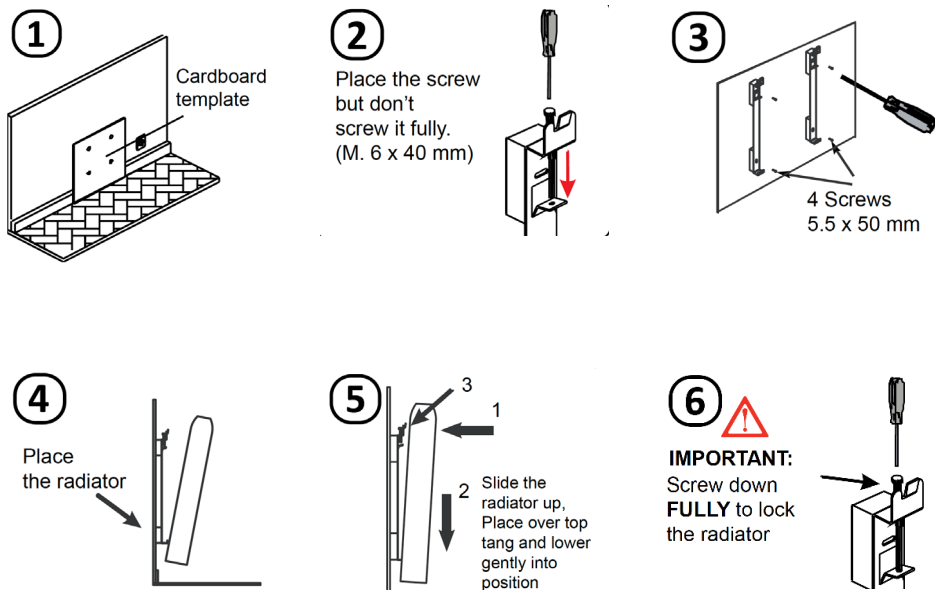


Follow the link at the end of this guide to access the full manual online.

Manual includes full installation and programming instructions, warranty details, safety guidance and advanced settings.

INSTALLATION

- Fix firmly to a solid and levelled wall.
- Check socket is within reaching distance.
- Unit must not be mounted within 15cm of any object - including adjacent walls.



SAFETY



- DO NOT COVER
- NOT FOR USE IN BATHROOMS
- SEE MANUAL FOR FULL SAFETY DETAILS

INITIAL SETUP

Plug in to a 13 Amp socket.

Press the ON/OFF switch located on the right-hand side.



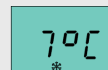
BABY CARE FUNCTION - OPTIONAL

Hold down and to activate baby care function. BABY CARE and ON will flash on the keypad. Repeat to de-activate. BABY CARE and OFF will display.

When baby care is activated, the radiator will operate at approximately half the wattage, keeping the surface at a lower temperature. Be aware that the radiator will heat up slower and may be less effective at getting rooms to temperature when this mode is engaged.

SET DAY & TIME

To reach clock screen, Press until you see the frost screen:



Hold down for 5 seconds.

Press once more.

Use and to set the weekday. Press

Use and to set the hours. Press

Use and to set the minutes. Press

CHOOSING A MODE

Press to toggle between frost and heating modes.

Frost: On frost, the radiator will only heat if the temperature drops below 7 °C. This is the mode to use if you're going away and want a minimal level of heat to prevent your pipes freezing.

Heating Modes:

Press to toggle between the 3 heating modes:



Comfort and Economy are constant heat modes. Use and to set the temperature.

Economy is always at least 3 degrees lower than comfort.

On program mode the radiator heats as per your set program, using the temperatures you set for comfort and economy.

KEYPAD LOCK

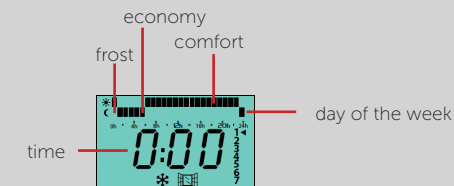
If the keypad is not responding, it may be locked.

Hold down and for 3 seconds to lock or unlock.

SETTING A PROGRAM

Press until you see the frost screen. Hold down for 5 seconds.

Programs are set by assigning a heating mode (comfort, economy or frost) to each hour of each day of the week.



The program starts at midnight on Monday. Use to choose the mode for this hour: comfort, economy or frost.



You can then move to the next hour using the or buttons:

Moves to the next hour without making changes

Use this if the next hour will be a different mode

Copies the current mode to the next hour

Use this if the next hour will be the same mode

Repeat this process for every hour of every day of the week.

If you make a mistake, you can't go backwards, but it's easy to start over and skip back to where you were. Your programming so far will be saved.

Press twice.

Hold down for 5 seconds.

Use to skip back to where you were.

When the program is set, the controller will move to the time setting screen. Follow the steps above to set or press to skip.

Follow the link at the end of this guide to access the full manual online.

Manual includes full installation and programming instructions, warranty details, safety guidance and advanced settings.

<https://www.electricradiatorsdirect.co.uk/media/pdf/RC-Wave-Manual-2020.pdf>